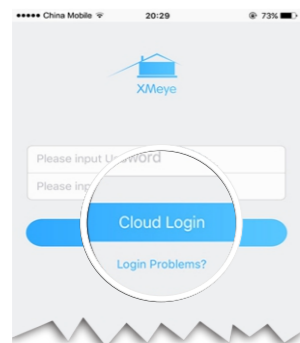
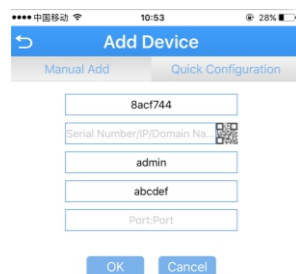


Using APP on phone



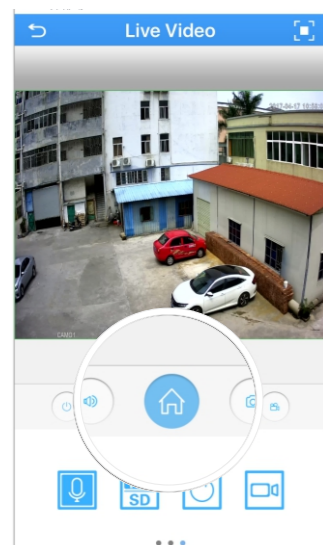
Cloud Login

1. Search and install App 'XMEYE' to your smart phone. Click 'Login Problems' to create account. Key in cloud information and click 'Cloud Login'



2. Click icon on top-right, Scan the QR code on the camera, Name the camera, Click "OK" to add the camera.

NOTE: You also can click search icon at the bottom to add the camera.

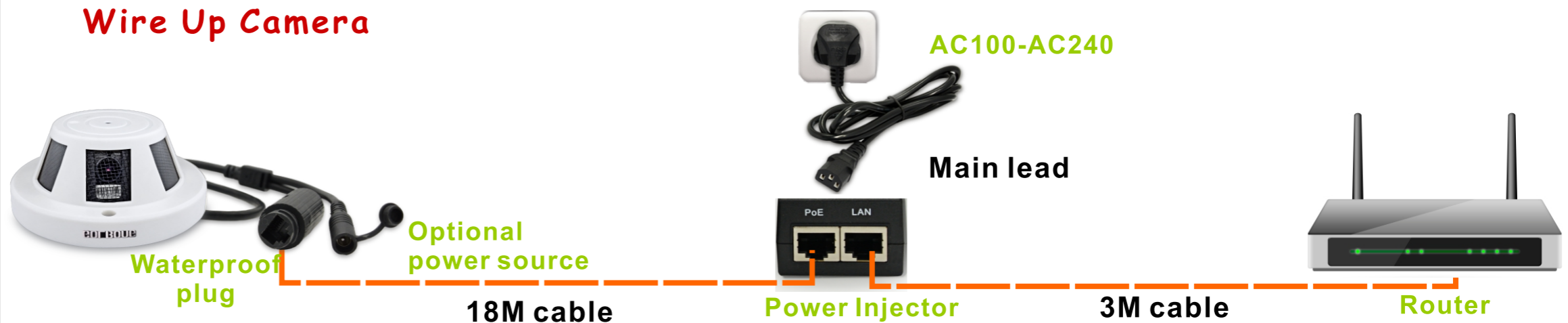


Live Video

3. Click the camera in the Device list to watch the live. Click Home icon you can configure your camera.

NOTE: Click icon on the top-left to return the device list. In the device list page, click page icon to view the snapshot and video on your smart phone

Wire Up Camera



Waterproof plug

1. Connect ethernet lead with waterproof plug to the camera
2. Push and twist two connections together



Closed the connection

3. Push the end cap over the fins and screw it into the place.



Wire to PoE injector

4. Connect Ethernet cable from the camera into the port marked 'PoE'.
5. Connect the 3M cable into the 'LAN' port and the other end on your router.



Power up Camera

6. Connect main lead to AC100-AC240V power.
- You should see the indicator LEDs flashing on the camera's connection.*

Connecting with PC software



Installing PC Software

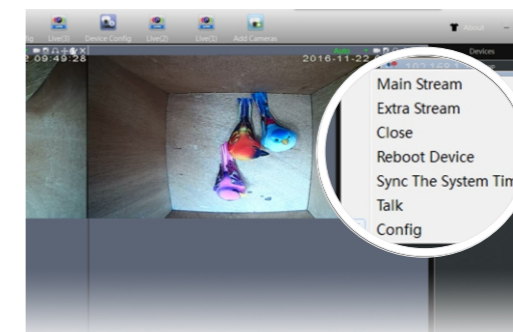
1. Download Windows CMS5 PC software using below link.
goo.gl/QTSKqP

Follow each step to install the software. Click CMS5 icon on the desktop to login the main console



Add the Camera

2. Click 'Add camera', you camera will be automatically discovered and show on the list. Select the camera and Click 'Add' button at the middle.



Live View

3. Return to main console, Double click camera in the list to watch the live.

NOTE: Right click camera name in live page, select 'Config' you can access camera setting.



Disable DHCP

4. Enter 'Config' page, Select the "Network". Un-check the "DHCP", the camera will use fixed IP address

NOTE: In the WIFI setting, you will be able to connect the camera to your home network with WIFI.

Need More Help

<http://www.golbong.com/support.asp>
support@golbong.com